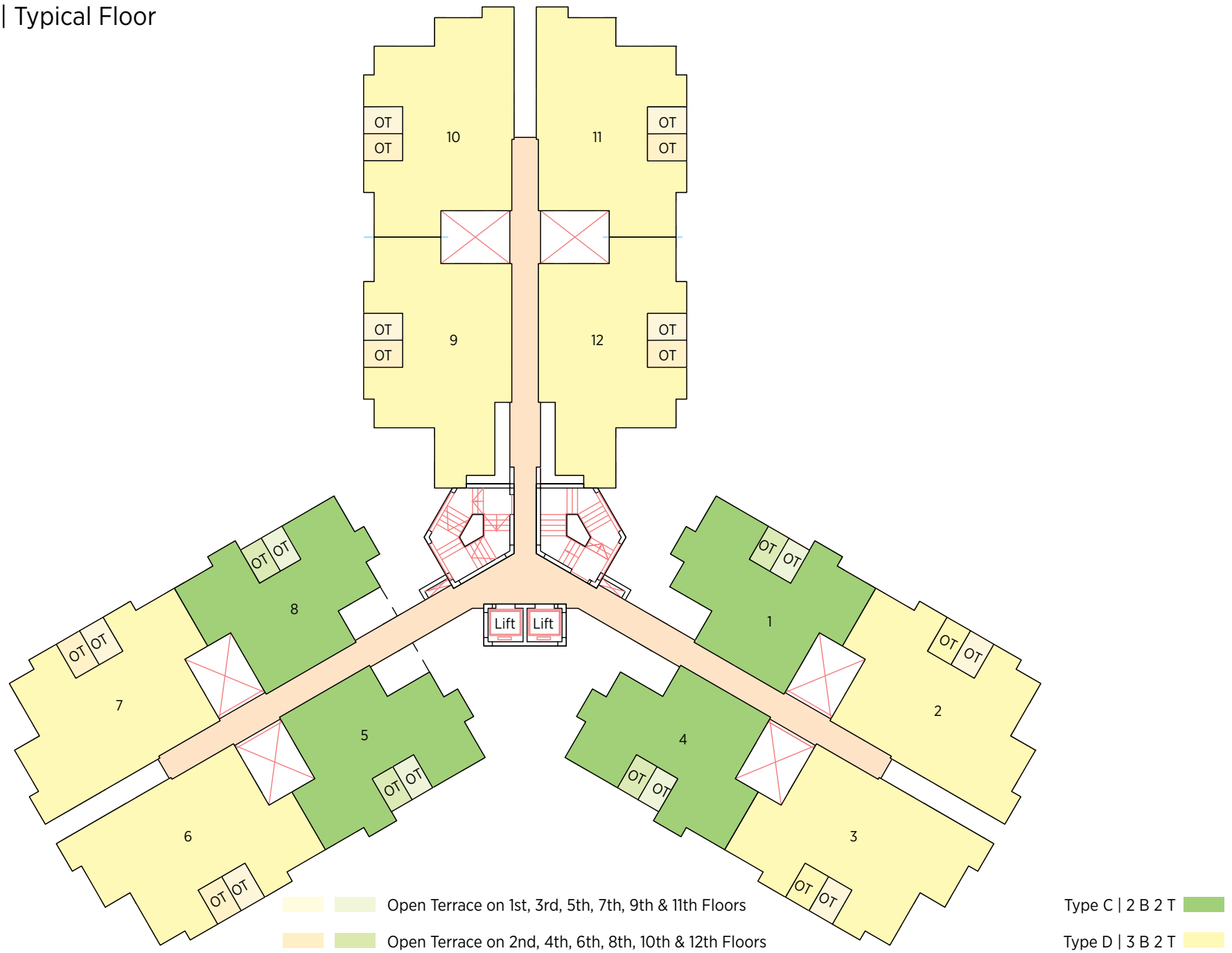
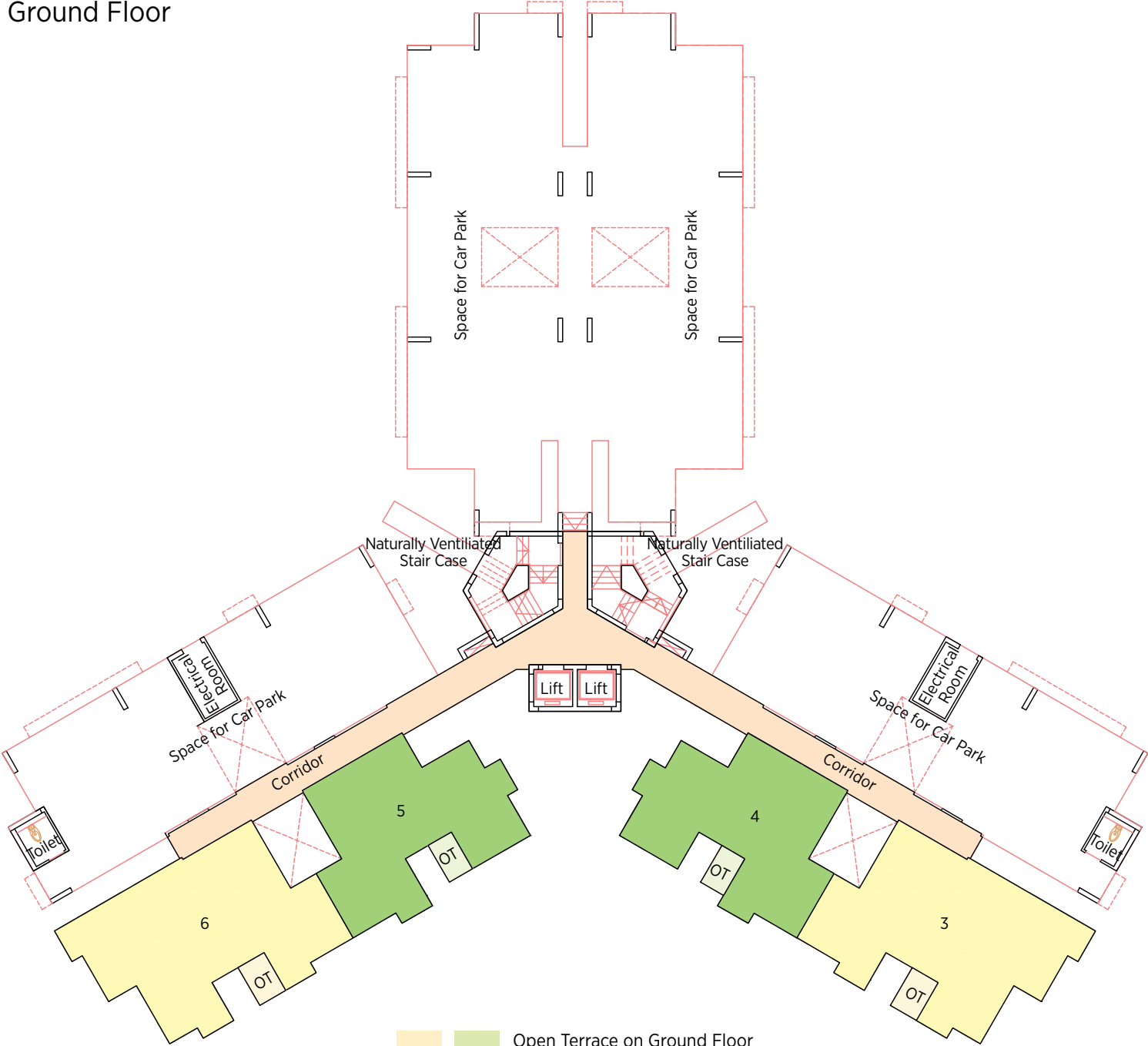


Tower A, C & D | Typical Floor



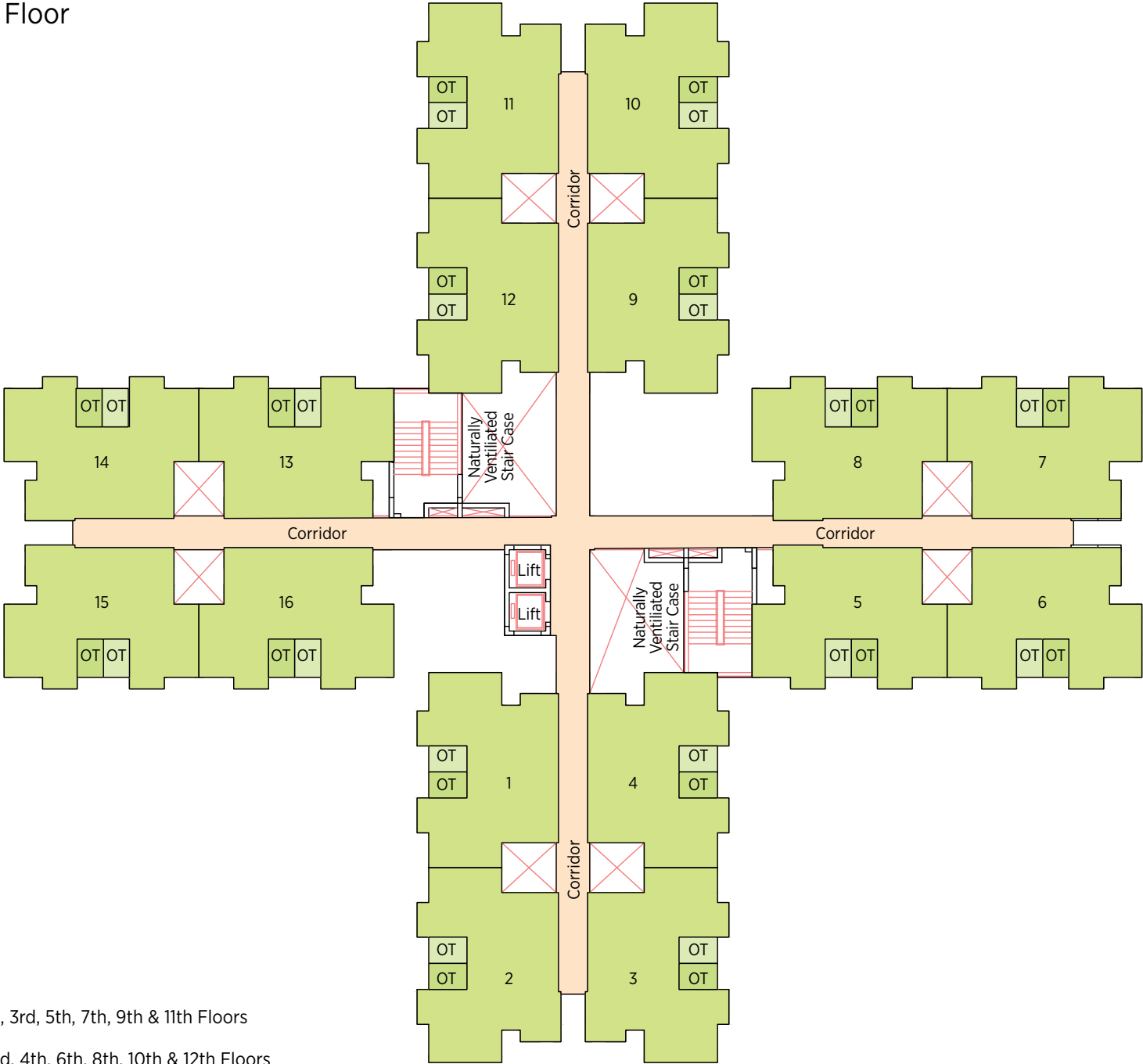
Tower A, C & D | Ground Floor



Type C | 2 B 2 T

Type D | 3 B 2 T

Tower B | Typical Floor



- Open Terrace on 1st, 3rd, 5th, 7th, 9th & 11th Floors
- Open Terrace on 2nd, 4th, 6th, 8th, 10th & 12th Floors

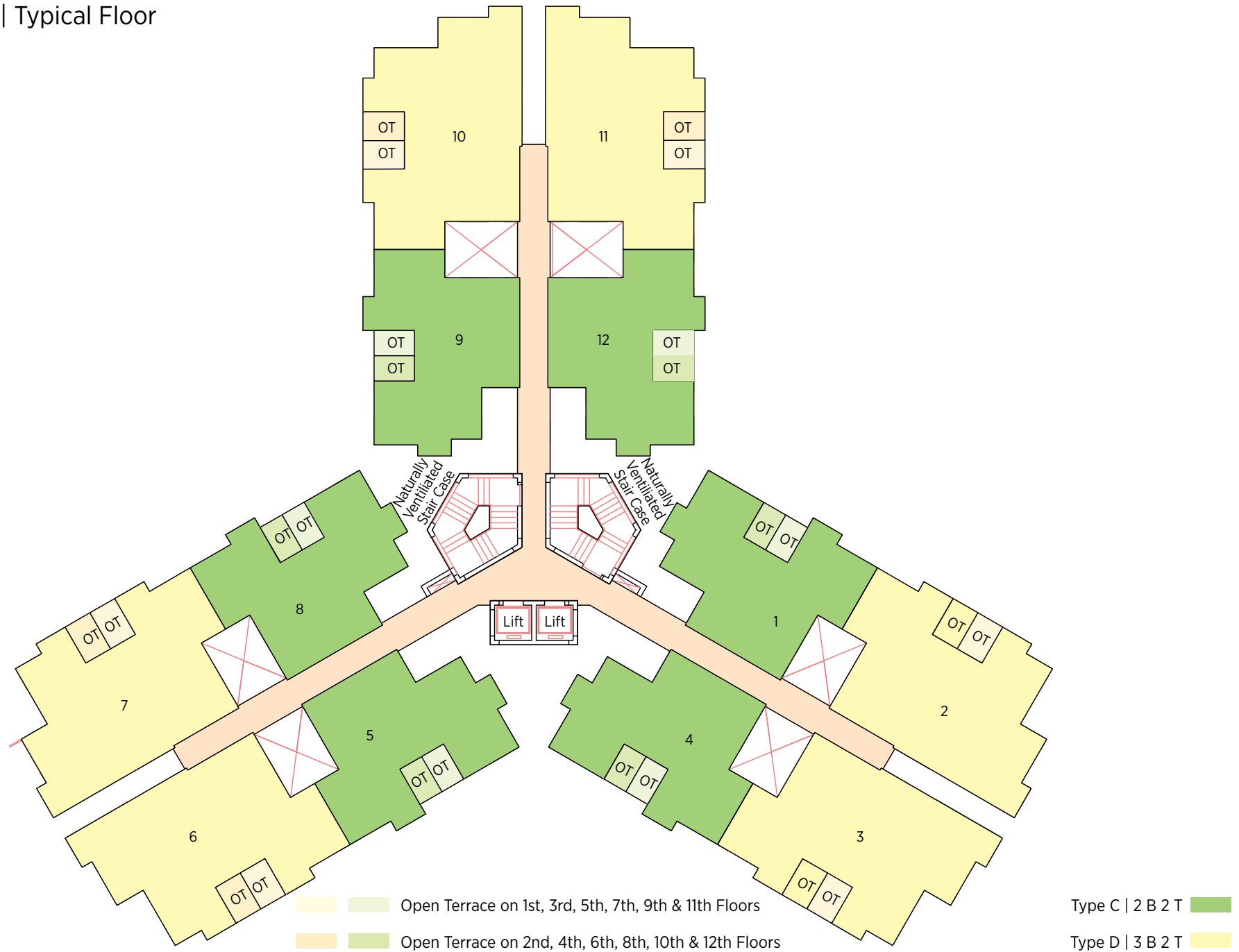
Tower B | Ground Floor



Open Terrace on Ground Floor

Type B | 2 B 1 T

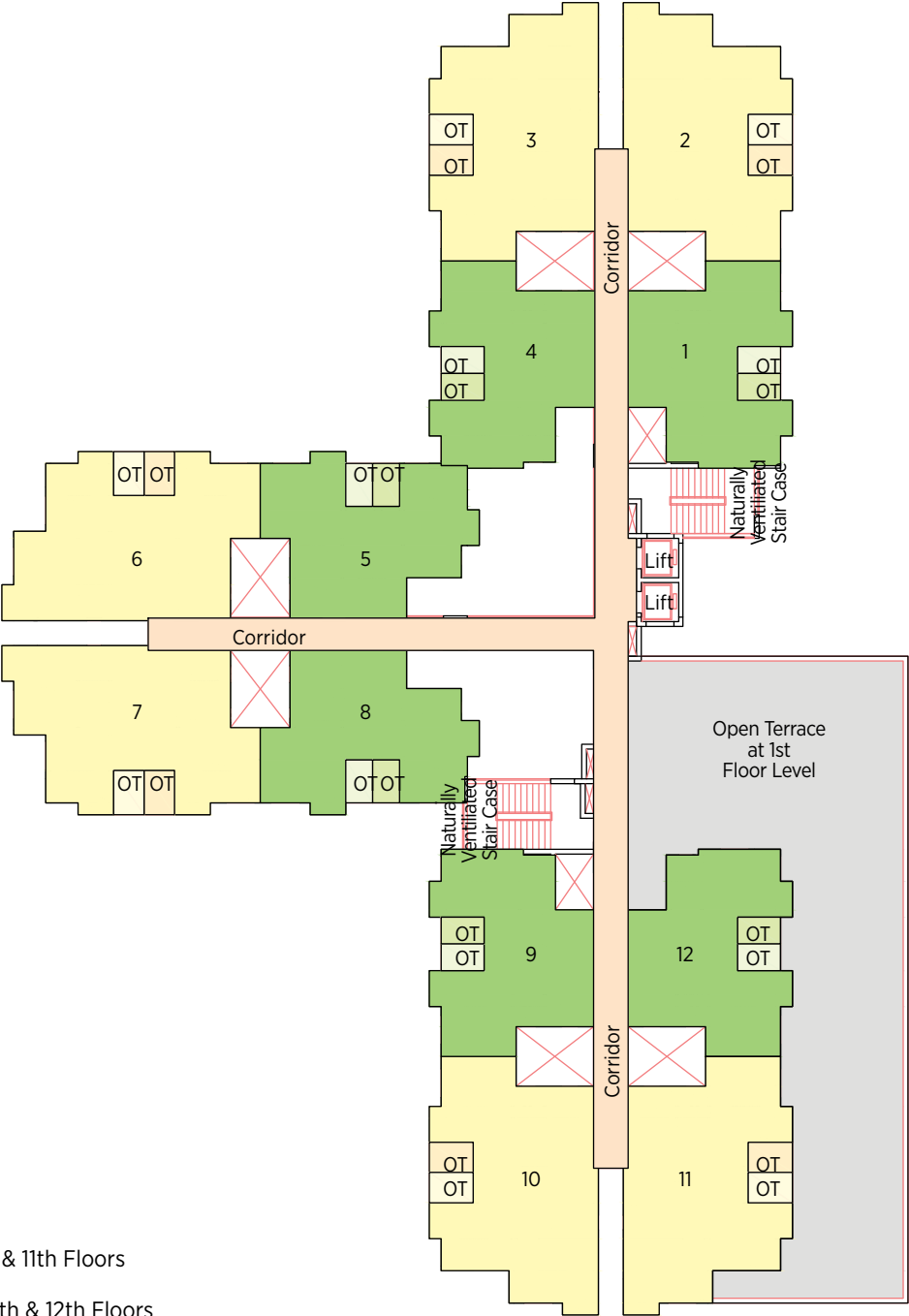
Tower E, F & H | Typical Floor



Tower E, F & H | Ground Floor



Tower G | Typical Floor



- Open Terrace on 1st, 3rd, 5th, 7th, 9th & 11th Floors
- Open Terrace on 2nd, 4th, 6th, 8th, 10th & 12th Floors

- Type C | 2 B 2 T
- Type D | 3 B 2 T