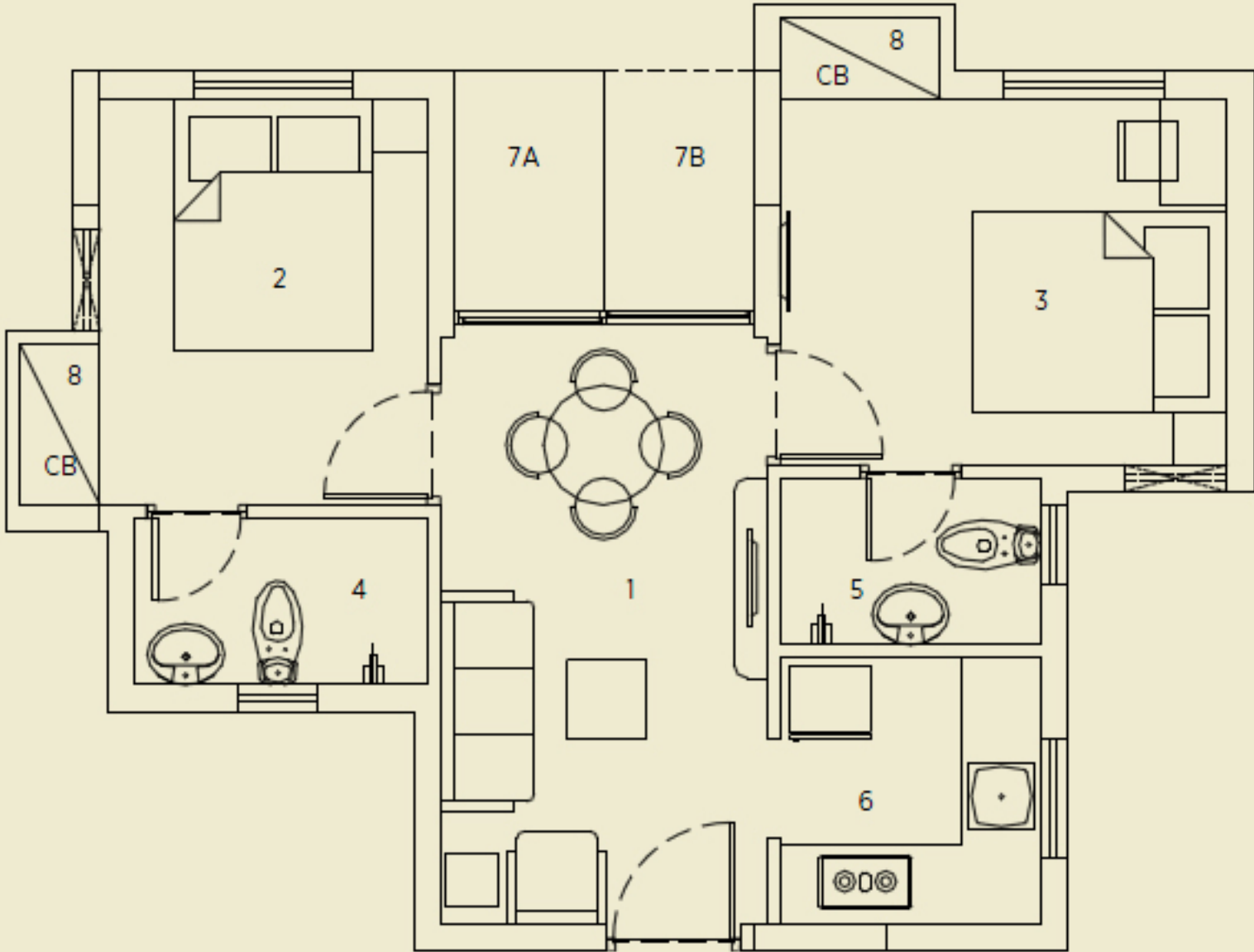


FLAT C | 2 B 2 T



Flat Type C | 2 B 2 T
Carpet area 423 sq ft
Built up area 508 sq ft
Standard built up area 710 sq ft

1	Living/Dining	8'0"x14'5"
2	Bedroom	8'0"x10'0"
3	Bedroom	11'0"x9'0"
4	Toilet	7'3"x4'1"
5	Toilet	6'5"x4'1"
6	Kitchen	6'5"x6'7"
7A*	Open terrace	3'8"x5'11"
7B*	Open terrace	3'8"x5'11"
8	Cabinet area	3'11"x2'0"

*Please refer to the Tower Plan